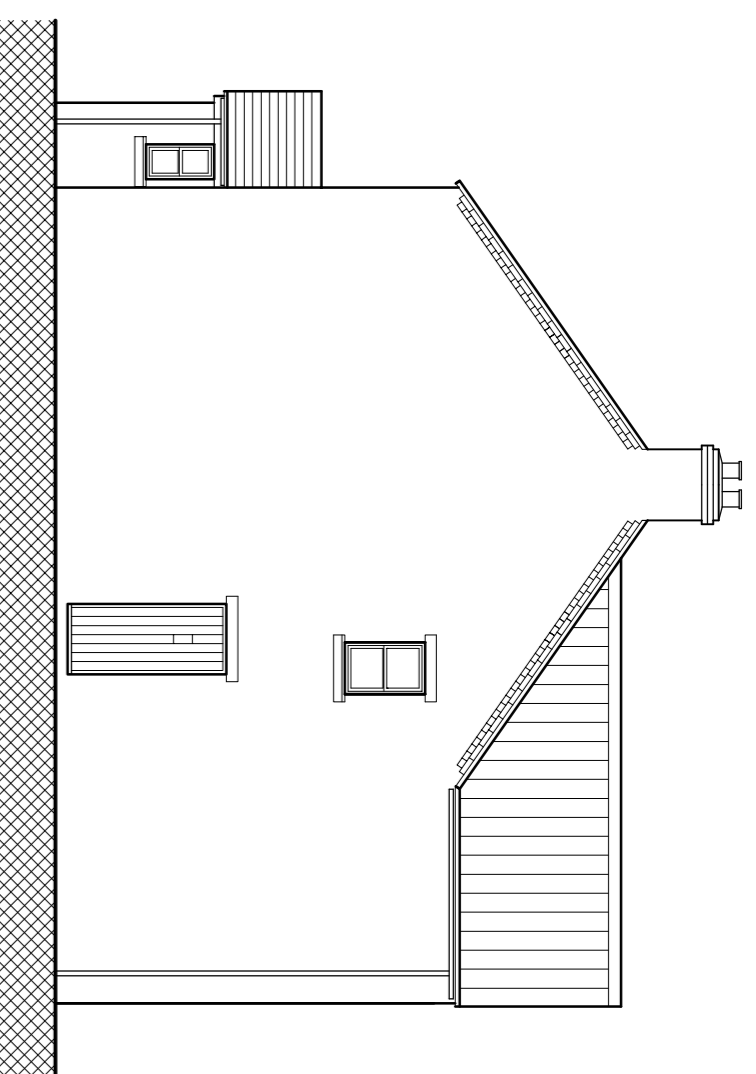
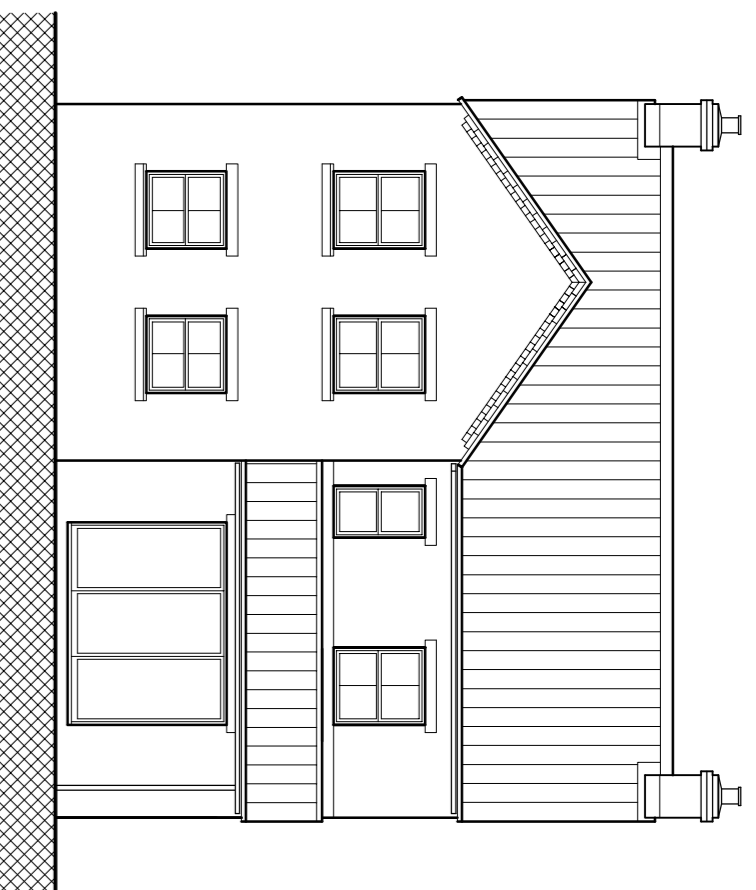


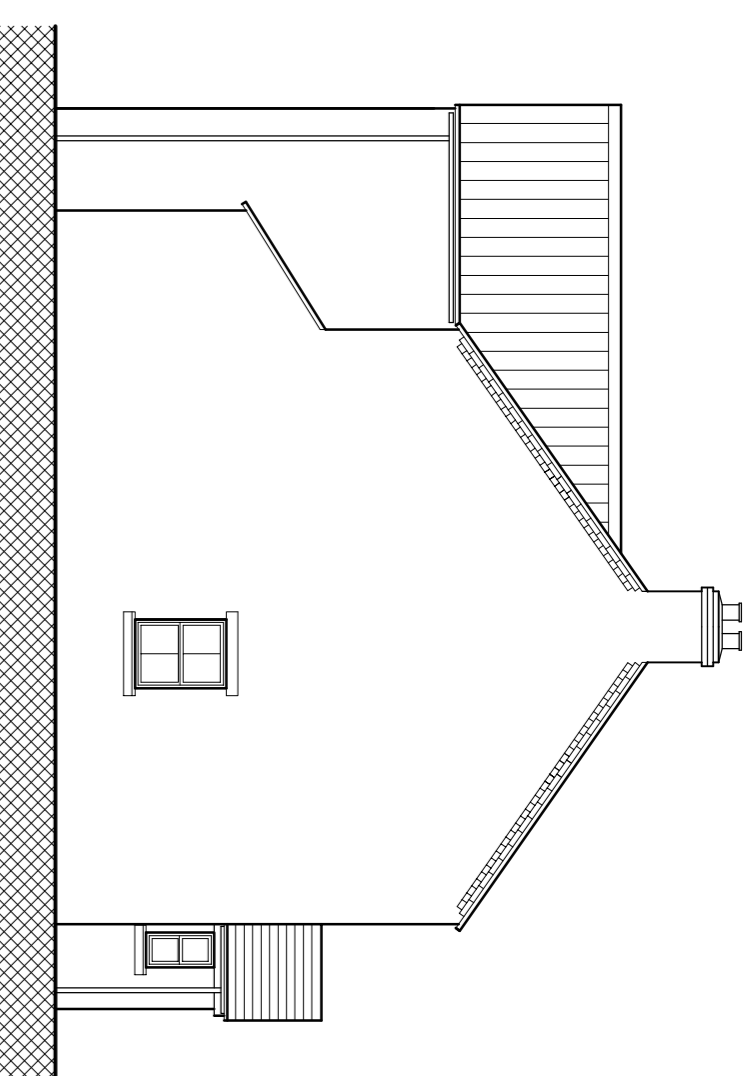
Front - North



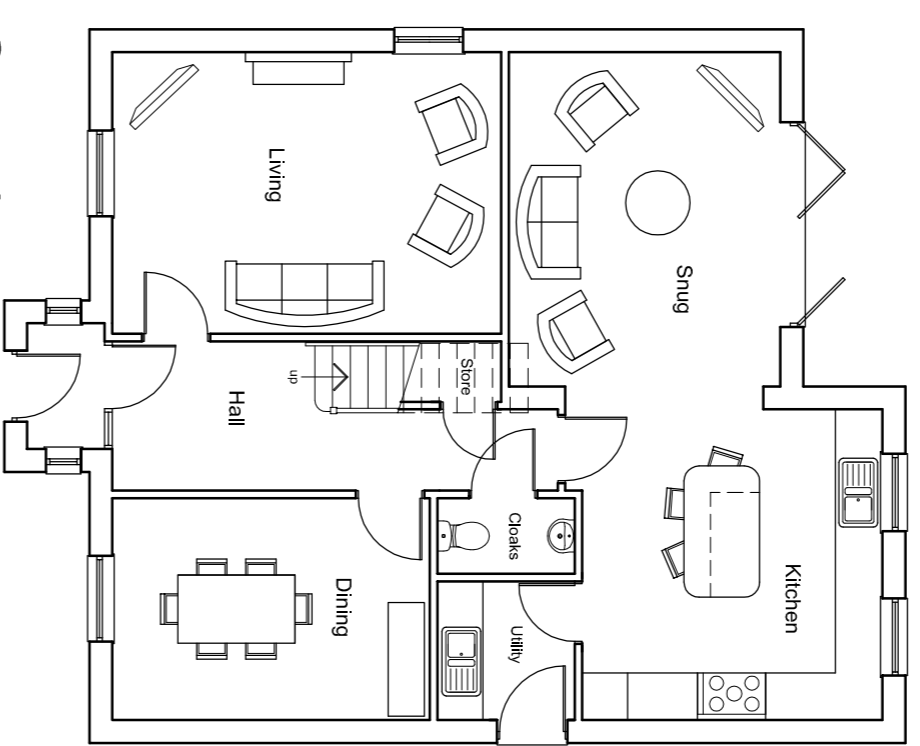
Side - West



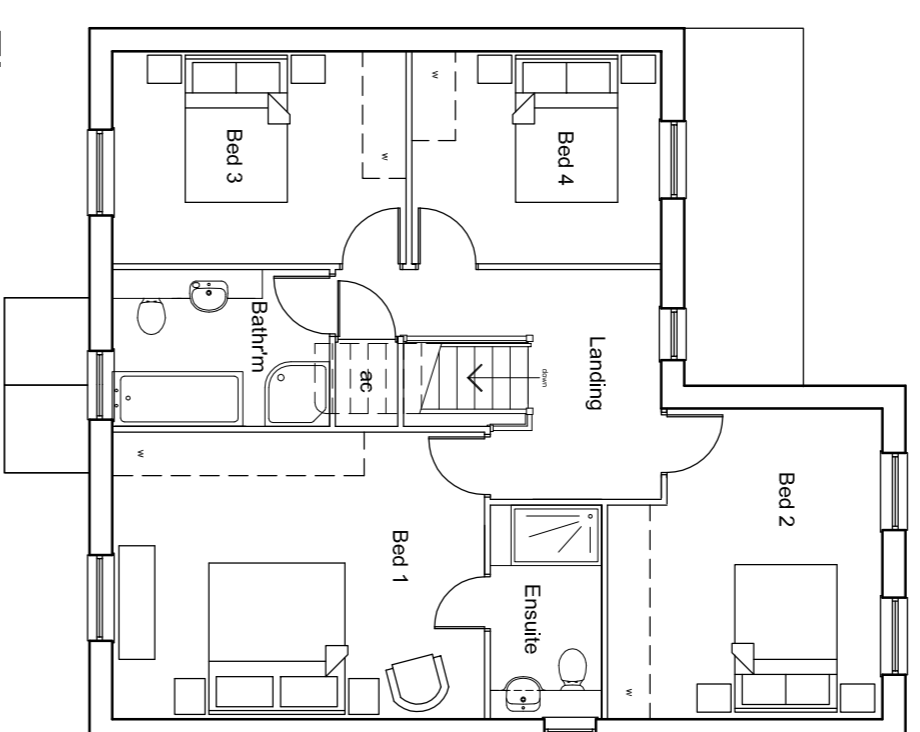
Rear - South



Side - East



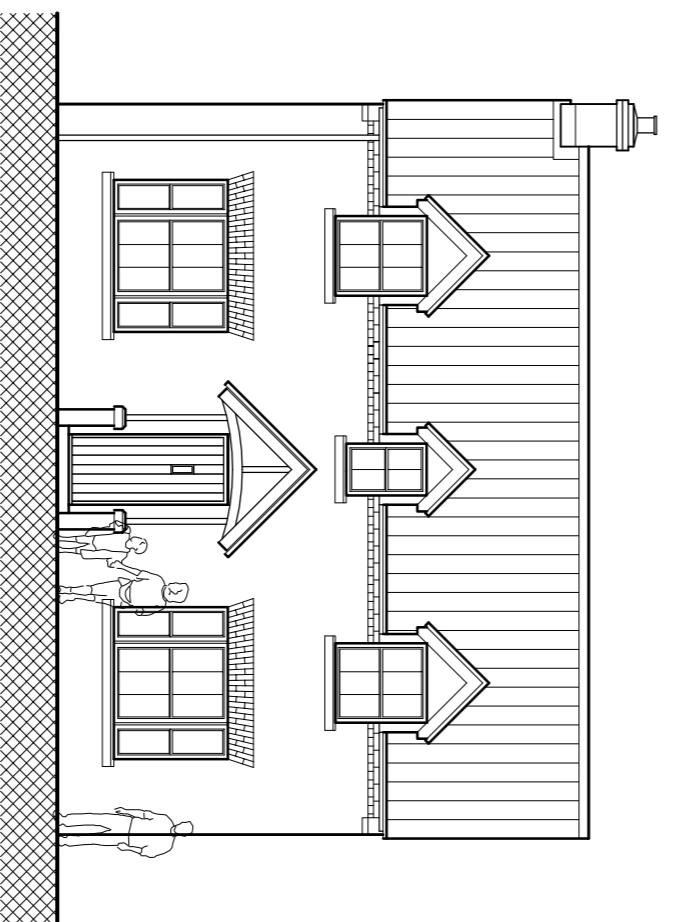
Ground



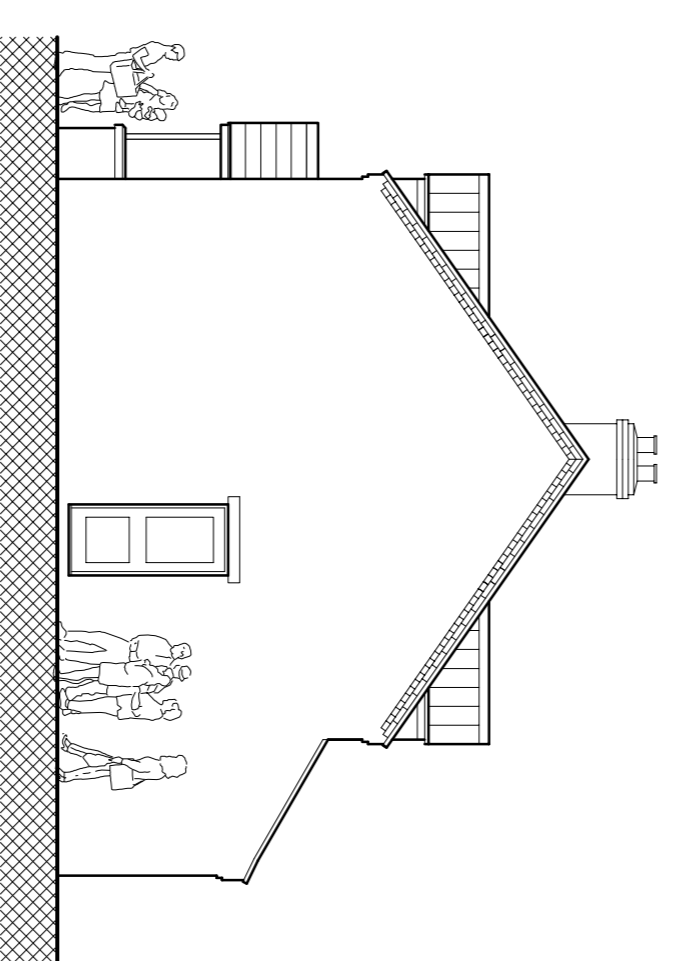
First

PLOTS 8 & 9
PLOT 11

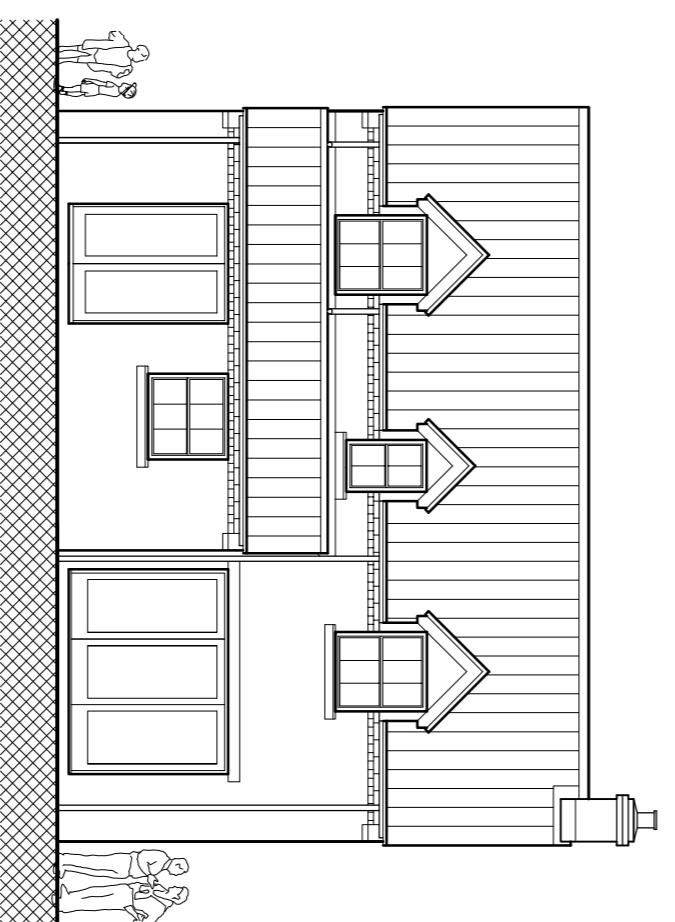
Plot 9 - handing as indicated
Plots 8 & 11 - handing opposite to indicated
Floor area - 161.57m² / 1729ft²



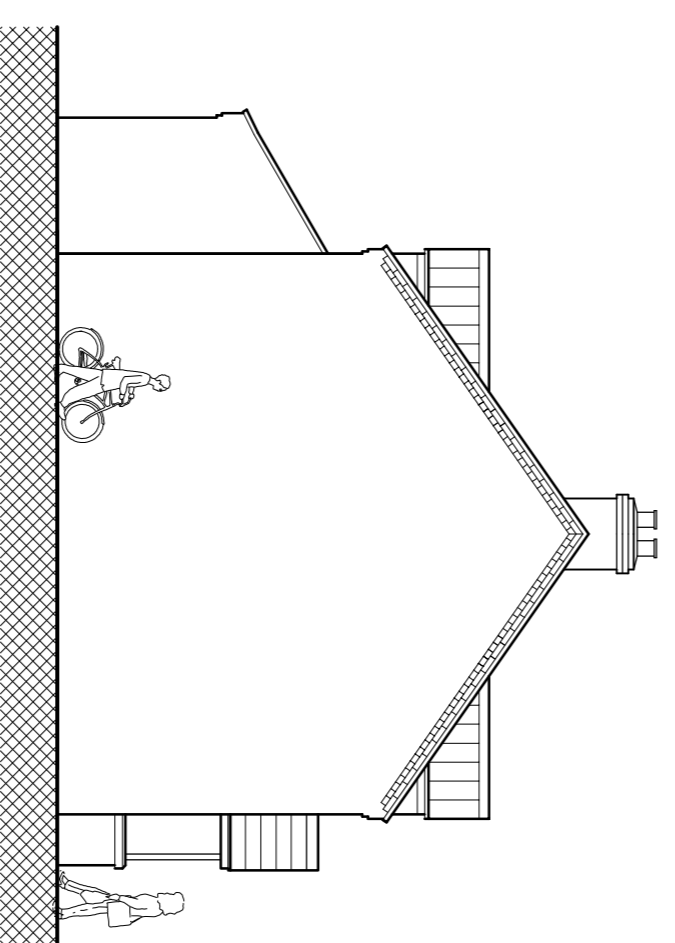
Front



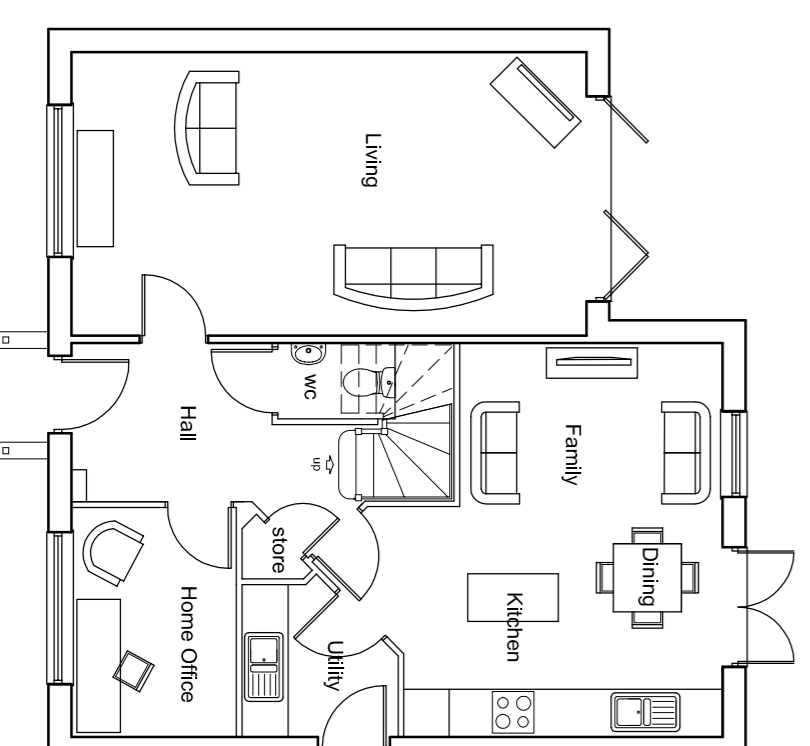
Side



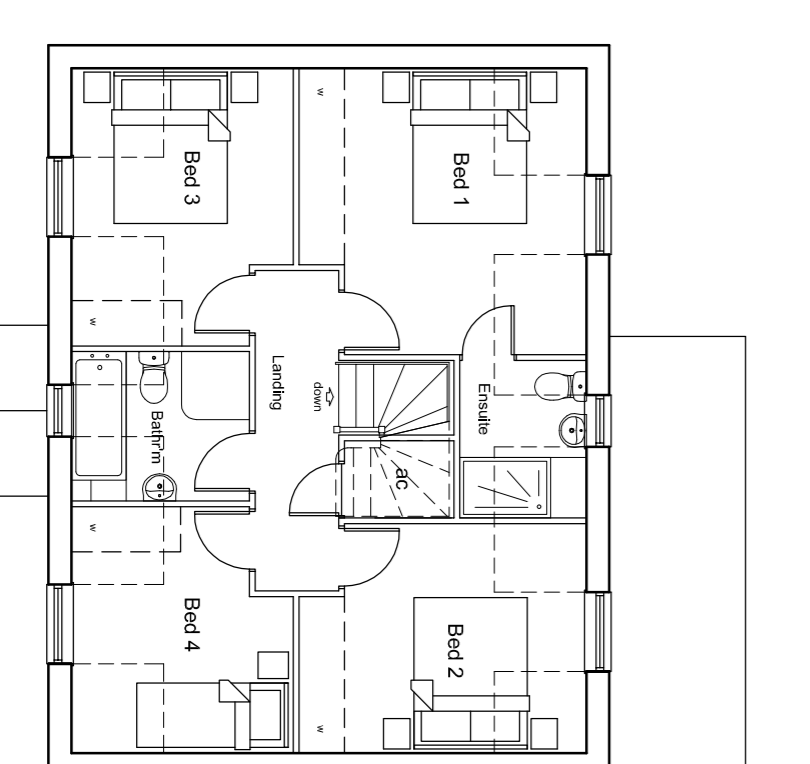
Rear



Side



Ground



First

PLOTS 12, 13 & 14

Plots 12 & 14 - handing as indicated
Plot 13 - handing opposite to indicated
Floor area - 132.78m² / 1429ft²



1:100 Scale Bar 0 1 2 3 4 5 6 7 8 9 10m

Materials Schedule

- Brick** - Plots 1 to 6 - Hanson South Down Multi; Plots 7 to 9 - Desimpel Halfway Branded Multi Stock; Plot 10 - Insock Bailey Oiled English Buff Stock; Plots 11 to 14 - Desimpel Kemley Antique Stock; Brickwork detailing - main body brick as relevant to each plot
- Roof** - Plots 1 to 6 - Sarnoff Double Panels, terracotta red; Plots 7 to 9 - Fretwell Gamma Panels, sunrise blend; Plot 10 - Sarnoff Double Panels, blue black; Plots 11 to 14 - Sarnoff County Panels, natural red
- Artisons** - heads and sills - Yorkstone smooth face
- Rainwater Goods** - black PVCu half round gutters and circular rainpipes
- External Doors** - GRP composite thermally efficient doors and frames to accord with SAP and App Doc L requirement.
- Windows** - white PVCu A Grade thermally efficient doors and frames to accord with SAP and App Doc L requirement.
- Accesses, Drives and Communal Parking** - Tarmac on compacted granular sub-base, on geo-textile membrane
- Paving** - Marshalls Saxon paving slabs, buff

Rev A - plot 14 design type amended, plots 12 & 13
handing adjusted - 04/05/17 - sj

Planning

Drawing No.	Scale @ A1	Drawn
628/04A	1:100	sj
	Date	Checked
	April 2017	

Drawing Title
**House Designs
Plots 8, 9, 11, 12, 13 & 14**

Client
Stanley Middlebrook Trust

Project
**Residential Development
Doncaster Road
Brayton
Selby
YO8 9EG**

J A Jennesson Associates Ltd
Chartered Architect
May Cottage
Mill Lane
Seaton Ross
York YO42 4NE
Tel: 01759 318200
www.jennessonassociates.co.uk
email: enquiries@jennessonassociates.co.uk